

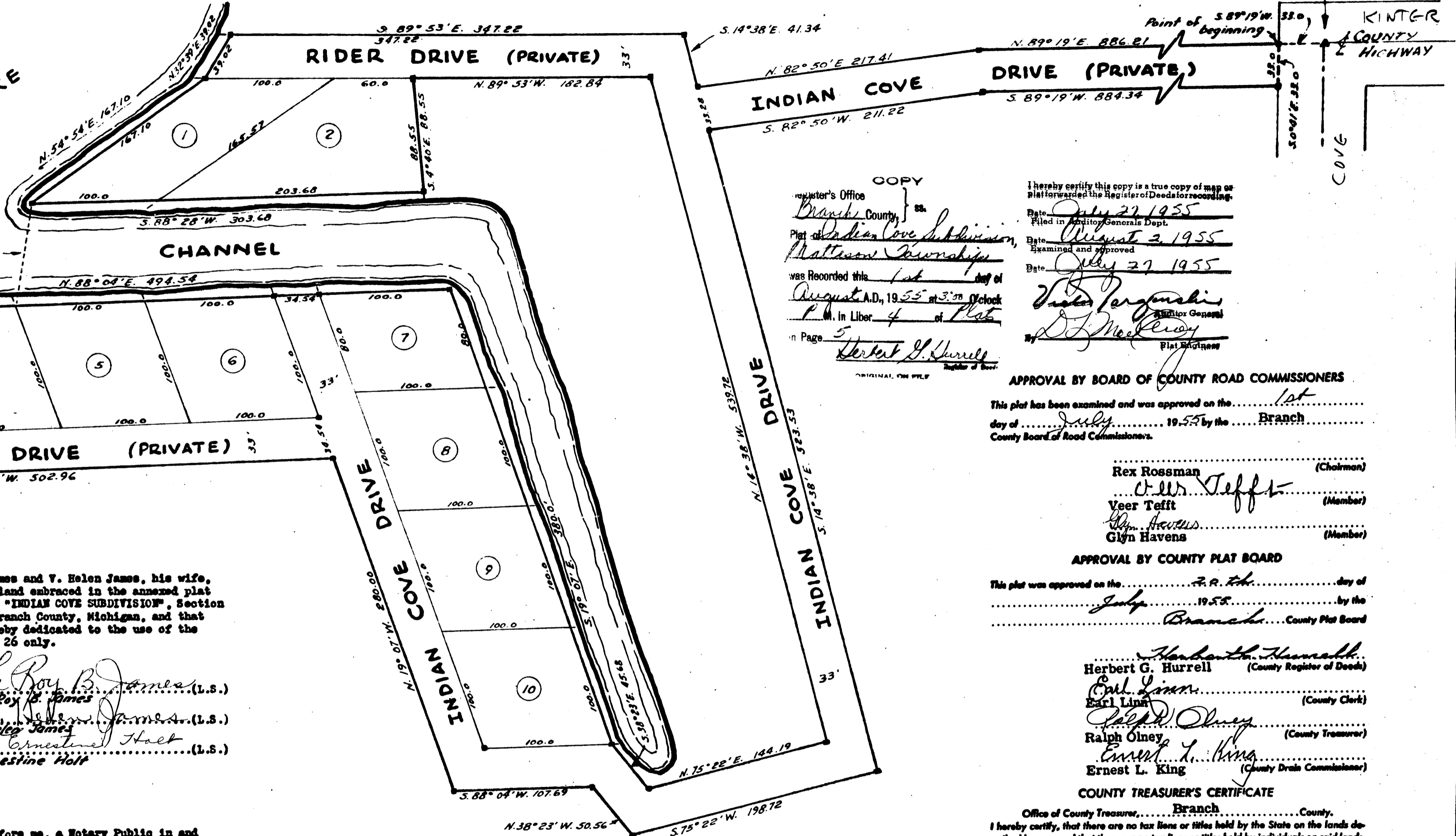
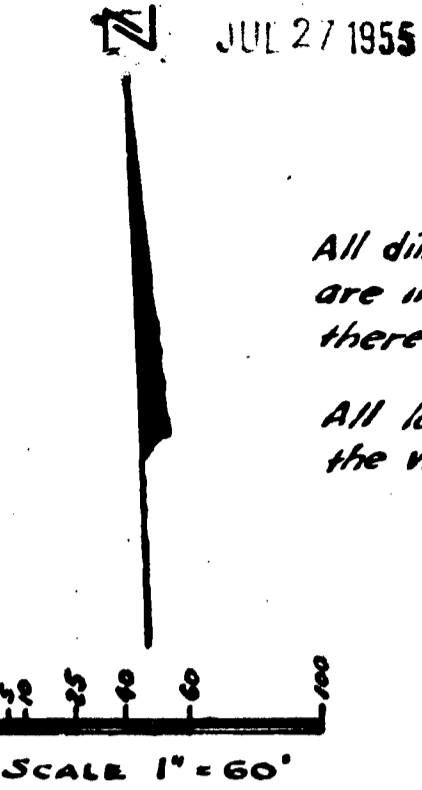
# "INDIAN COVE SUBDIVISION"

SECTION 26, TOWN 6 SOUTH, RANGE 8 WEST, MATTESON  
TOWNSHIP, BRANCH COUNTY, MICHIGAN

North quarter corner of  
Section 26, T. 6 S., R. 8 W.

All dimensions hereon given  
are in feet and decimals  
thereof.

All lot lines extend to  
the waters edge.



COPY  
Register's Office  
Branch County, Mich.  
Plat of Indian Cove Subdivision,  
Matteson Township  
was Recorded this 1st day of  
August, A.D., 1955 at 3:50 o'clock  
P.M. in Liber 4 of Plats  
Page 5  
Herbert G. Hurrell  
County Register

I hereby certify this copy is a true copy of map as  
platted and forwarded the Register of Deeds for recording.  
Date July 27, 1955  
Filed in Auditor General's Dept.  
Date August 3, 1955  
Examined and approved  
Date July 27, 1955  
V. J. Ferguson  
Auditor General  
J. J. Mackay  
Plat Engineer

### APPROVAL BY BOARD OF COUNTY ROAD COMMISSIONERS

This plat has been examined and was approved on the 1st  
day of July, 1955 by the Branch  
County Board of Road Commissioners.

Rex Rossman (Chairman)  
W. J. Jeffers (Member)  
Veer Tefft (Member)  
Wm. Havens (Member)  
Glyn Havens (Member)

### APPROVAL BY COUNTY PLAT BOARD

This plat was approved on the 22nd day of  
July, 1955 by the Branch  
County Plat Board

Herbert G. Hurrell (County Register of Deeds)  
Earl Linn (County Clerk)  
Ralph Olney (County Treasurer)  
Ernest L. King (County Drain Commissioner)

### COUNTY TREASURER'S CERTIFICATE

Office of County Treasurer, Branch County.  
I hereby certify that there are no tax liens or titles held by the State on the lands  
described hereon, and that there are no tax liens or titles held by individuals on said lands,  
for the five years preceding the 19th day of  
July, 1955, and that the taxes for said period of  
five years are all paid, as shown by the records of this office.

This certificate does not apply to taxes, if any, now in process of collection by township,  
city or village collecting officers.  
Ralph Olney (County Treasurer)

### SURVEYOR'S CERTIFICATE

I hereby certify that the plat hereon delineated is a correct one, and that permanent  
monuments consisting of iron rods at least one half inch in diameter and 36 inches in  
length, encased in concrete cylinders four inches in diameter and 36 inches in length,  
have been set at points marked thus (M) as thereon shown at all angles in the bound-  
aries of the land platted, at all intersections of the lines of streets and at intersections  
of the lines of streets with the boundaries of the plat.  
Edward R. Reed  
Registered Land Surveyor

### DEDICATION

KNOW ALL MEN BY THESE PRESENTS, That we, LeRoy B. James and V. Helen James, his wife,  
and Ernestine Holt, as proprietors, have caused the land embraced in the annexed plat  
to be surveyed, laid out and platted, to be known as "INDIAN COVE SUBDIVISION", Section  
26, Town 6 South, Range 8 West, Matteson Township, Branch County, Michigan, and that  
the streets and drives as shown on said plat are hereby dedicated to the use of the  
land owners in the northwest quarter of said Section 26 only.

Signed and Sealed in Presence of:  
G. N. Pearce  
LeRoy B. James (L.S.)  
V. Helen James (L.S.)  
Ernestine Holt (L.S.)  
Gerald N. Pearce  
Gerald N. Pearce  
Notary Public, Branch County,  
Michigan  
My Commission Expires June 4, 1957

### ACKNOWLEDGMENT

STATE OF MICHIGAN  
County of Branch  
On this 1st day of July, 1955 before me, a Notary Public in and  
for said county, personally came the above named LeRoy B. James and V. Helen James,  
his wife, and Ernestine Holt, known to me to be the persons who executed the above  
dedication, and acknowledged the same to be their free act and deed.

Gerald N. Pearce  
Notary Public, Branch County,  
Michigan  
My Commission Expires June 4, 1957

### CERTIFICATE OF MUNICIPAL APPROVAL

This plat was approved by the Township Board of the Township of Matteson at a meeting  
held July 1, 1955  
Will James (Clerk)

DESCRIPTION OF LAND PLATTED  
The land embraced in the annexed plat of "INDIAN COVE SUBDIVISION", Section 26, Town  
6 South, Range 8 West, Matteson Township, Branch County, Michigan, is described as  
follows: Beginning at a point S. 89° 19' W. 33.0 feet from the north quarter corner  
of said Section 26, and running thence S. 0° 41' E. 33.0 feet; thence S. 89° 19' W.  
884.34 feet; thence S. 82° 50' W. 211.22 feet; thence S. 14° 38' E. 523.53 feet; thence  
S. 75° 22' W. 198.72 feet; thence S. 38° 23' W. 50.56 feet; thence S. 88° 04' W.  
107.69 feet; thence N. 19° 07' E. 280.0 feet; thence S. 88° 04' W. 502.96 feet; thence  
N. 36° 50' E. 164.85 feet; thence N. 88° 04' E. 494.54 feet; thence S. 19° 07' E.  
360.0 feet; thence S. 38° 23' W. 45.68 feet; thence N. 75° 22' E. 144.19 feet; thence  
N. 14° 38' W. 539.72 feet; thence S. 89° 53' W. 182.84 feet; thence S. 4° 40' E.  
88.55 feet; thence S. 88° 28' W. 303.68 feet; thence N. 54° 54' E. 167.10 feet; thence  
N. 32° 39' E. 39.02 feet; thence S. 89° 53' E. 347.22 feet; thence S. 14° 38' E.  
41.34 feet; thence N. 82° 50' E. 217.41 feet; thence N. 89° 19' E. 886.21 feet to the  
point of beginning.

36467