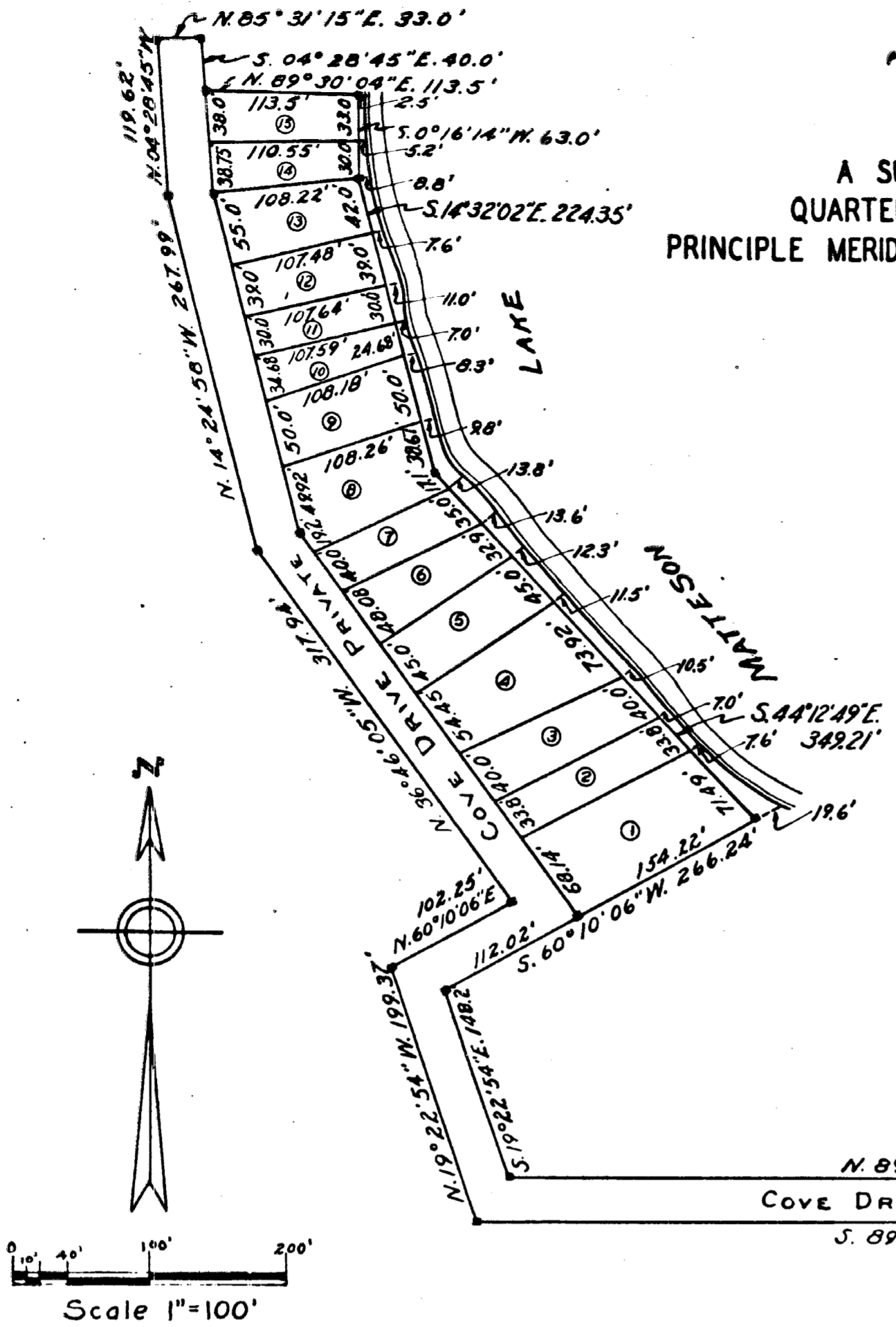


# "COVE RESORT"

A SUBDIVISION OF PART OF THE SOUTHEAST FRACTIONAL QUARTER OF SECTION 23, TOWN 6 SOUTH, RANGE 8 WEST, MICHIGAN PRINCIPLE MERIDIAN, TOWNSHIP OF MATTESON, COUNTY OF BRANCH, STATE OF MICHIGAN



### DEDICATION

KNOW ALL MEN BY THESE PRESENTS, That I Alexander Sisco, a single man, as proprietor have caused the land embraced in the annexed plat to be surveyed, laid out and platted, to be known as "Cove Resort" A Subdivision Of Part Of The Southeast Fractional Quarter Of Section 23, Town 6 South, Range 8 West, Michigan Principle Meridian, Township Of Matteson, County Of Branch, State Of Michigan, and that the streets as shown on said plat are hereby dedicated to the use of the lot owners only.

Signed and Sealed in the Presence of:

R. W. Cutler (L.S.)  
R. W. Cutler (Witness)  
Gertrude Blaskie (L.S.)  
Gertrude Blaskie (Witness)

Alexander Sisco (L.S.)  
Alexander Sisco

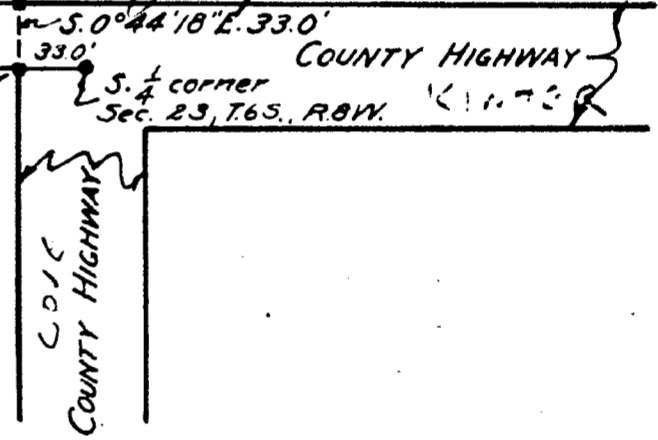
### ACKNOWLEDGMENT

STATE OF MICHIGAN } ss.  
County of Branch }  
On this 13<sup>th</sup> day of November 1945, before me, a Notary Public in and for said county, personally came the above named Alexander Sisco known to me to be the person who executed the above dedication, and acknowledged the same to be his free act and deed.

Robert W. Cutler Robert W. Cutler  
Notary Public, Branch County  
My Commission expires July 4-1948

N. 89°15'42"E. 862.53'  
COVE DRIVE PRIVATE  
S. 89°15'42"W. 886.21'

Point of Beginning



NOTE: All dimensions are given in feet and decimals thereof.

### DESCRIPTION OF LAND PLATTED

The land embraced in the annexed plat of "Cove Resort" A Subdivision Of Part Of The Southwest Fractional Quarter of Section 23, Town 6 South, Range 8 West, Michigan Principle Meridian, Township of Matteson, County of Branch, State of Michigan, is described as follows: Beginning at a point which is S. 89°15'42"W. 33.0 feet from the south quarter corner of said section 23, and running S. 89°15'42"W. 886.21 feet, thence N. 19°22'54"W. 199.37 feet, thence N. 60°10'06"E. 102.25 feet, thence N. 36°46'05"W. 317.94 feet, thence N. 14°24'58"W. 267.99 feet, thence N. 4°28'45"W. 119.62 feet, thence N. 85°31'15"E. 33.0 feet, thence S. 04°28'45"E. 40.0 feet, thence N. 89°30'04"E. 113.5 feet, thence S. 00°16'14"W. 63.00 feet, thence S. 14°32'02"E. 224.35 feet, thence S. 44°12'49"E. 349.21 feet, thence S. 60°10'06"W. 266.24 feet, thence S. 19°22'54"E. 148.20 feet, thence N. 89°15'42"E. 862.53 feet, thence S. 00°44'18"E. 33.0 feet to the point of beginning. Bearings given are true bearings, based on astronomical observations. All lots extend to the water's edge.

### SURVEYOR'S CERTIFICATE

I hereby certify that the plat hereon delineated is a correct one and that permanent metal monuments consisting of bars not less than one-half inch in diameter and 48 inches in length, encased in a 4"x4"x4" concrete post have been placed at points marked thus (■) as thereon shown at all angles in the boundaries of the land platted, at all the intersections of streets, and at the intersections of streets with the boundaries of the plat as shown on said plat.

H. L. Russell  
H. L. Russell - Registered Land Surveyor N<sup>o</sup> 5236

### MUNICIPAL APPROVAL

This plat was approved by the Township Board of the Township of Matteson at a meeting held November 29, 1945

Will James  
Will James (Clerk)

### APPROVAL BY COUNTY BOARD

This plat was approved on the 13<sup>th</sup> day of November 1945

Herbert G. Hurrell  
Herbert G. Hurrell (County Register of Deeds)

Earl Linn  
Earl Linn (County Clerk)

Ralph Olney  
Ralph Olney (County Treasurer)

### COUNTY TREASURER'S CERTIFICATE

Office of County Treasurer, Branch County  
I hereby certify, that there are no tax liens or titles held by the State on the lands described hereon, and that there are no tax liens or titles held by individuals on said lands for the five years preceding the 13<sup>th</sup> day of November 1945, and that the taxes for said period of five years are all paid, as shown by the records of this office. This certificate does not apply to taxes, if any, now in process of collection by township, city or village collecting officers.

Ralph Olney  
Ralph Olney (County Treasurer)

### APPROVAL BY BOARD OF COUNTY ROAD COMMISSIONERS

This plat has been examined and was approved on the 23 day of November 1945 by the Branch County Board of Road Commissioners.

Rex Rossman (Chairman)  
Veer Tefft (Member)  
Glyn Havens (Member)

COPY  
Branch County, ss.  
Plat of Cove Resort  
Matteson Township  
was filed of this 17<sup>th</sup> day of December, A.D. 1945 at 5 o'clock P.M. in Liber 3 of Plat Maple Forest No. 1  
on Page 1

HEREBY CERTIFY THAT THIS COPY IS A TRUE COPY OF THE MAP OR PLAT FORWARDED TO THE REGISTER OF DEEDS FOR RECORDING.

Herbert G. Hurrell  
Herbert G. Hurrell (Register of Deeds)

Examined and Approved  
December 26, 1945  
Marjoe Jewell Purdy  
Marjoe Jewell Purdy (Deputy Auditor General)

FILED IN AUDITOR GENERAL'S DEPT.

December 26, 1945  
Marjoe Jewell Purdy  
Marjoe Jewell Purdy (Auditor General)