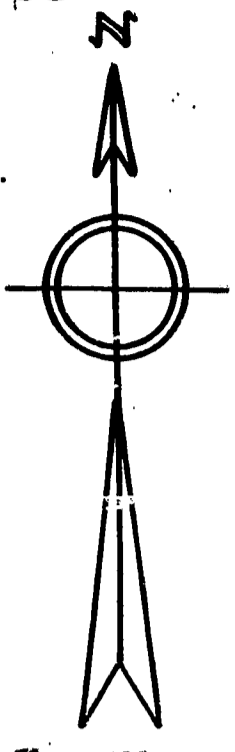


25M
1-19-53

SUPERVISOR'S PLAT OF COVE RESORT

A SUBDIVISION OF PART OF THE SOUTHWEST FRACTIONAL QUARTER OF SECTION 23, TOWN 6 SOUTH, RANGE 8 WEST, MICHIGAN
PRINCIPLE MERIDIAN, TOWNSHIP OF MATTESON, COUNTY OF BRANCH, STATE OF MICHIGAN



Scale 1"=80'

NOTE: Lot lines extend to waters edge.
Dimensions are in feet and decimals thereof.

DEDICATION

KNOW ALL MEN BY THESE PRESENTS, That I, Leonard E. Longwell, Supervisor of the Township of Matteson, Branch County, State of Michigan, by virtue of authority in me vested by Section 51, Act 172, of 1929, having been duly authorized by the Matteson Township Board, have caused the land described in the annexed plat to be surveyed, laid out and platted, to be known as "Supervisor's Plat of Cove Resort A Subdivision of Part of The Southwest Fractional Quarter of Section 23, Town 6 South, Range 8 West, Michigan Principle Meridian, Township of Matteson, County of Branch, State of Michigan" and that the streets as shown on said plat are now being used for such purposes.

Witnesses:
Ernest L. King
Edward R. Reed

Leonard E. Longwell (Seal)
Supervisor of the township of Matteson

SURVEYOR'S CERTIFICATE

I hereby certify that the plat hereon delineated is a correct one and that permanent metal monuments consisting of bars not less than one-half inch in diameter and 48 inches in length, encased in a concrete post of at least 2 inches square and 48 inches in depth, have been placed at points marked thus (a) as thereon shown at all angles in the boundaries of the land platted, at all intersections of streets, and at the intersections of streets with the boundaries of the plat as shown on said plat.

Harold L. Russell
Registered Land Surveyor

CERTIFICATE OF APPROVAL BY BOARD OF COUNTY ROAD COMMISSIONERS

This plat has been examined and was approved on the 14th day of Nov. 1952, by the Branch County Board of Road Commissioners.

FILED IN AUDITOR GENERAL'S DEPT.

January 23, 1953
Mayme Jewell Purdy
DEPUTY AUDITOR GENERAL
Mayme Jewell Purdy

Glyn Havens Chairman
Rex Rossman Member
Veer Jofft Member

CERTIFICATE OF MUNICIPAL APPROVAL

This plat was approved by the Township Board of the township of Matteson at a meeting held Dec. 12, 1952.

Will James
Willy James Clerk

CERTIFICATE OF APPROVAL BY COUNTY BOARD

This plat was approved on the 16th day of Dec. 1952, by the Branch County Plat Board.

Examined and Approved
January 19, 1953
Mayme Jewell Purdy
Notary Auditor General
Mayme Jewell Purdy

Herbert G. Murrell Register of Deeds
Earl Linn County Clerk
Ralph Olney County Treasurer
Ernest L. King Drain Commissioner

ACKNOWLEDGMENT

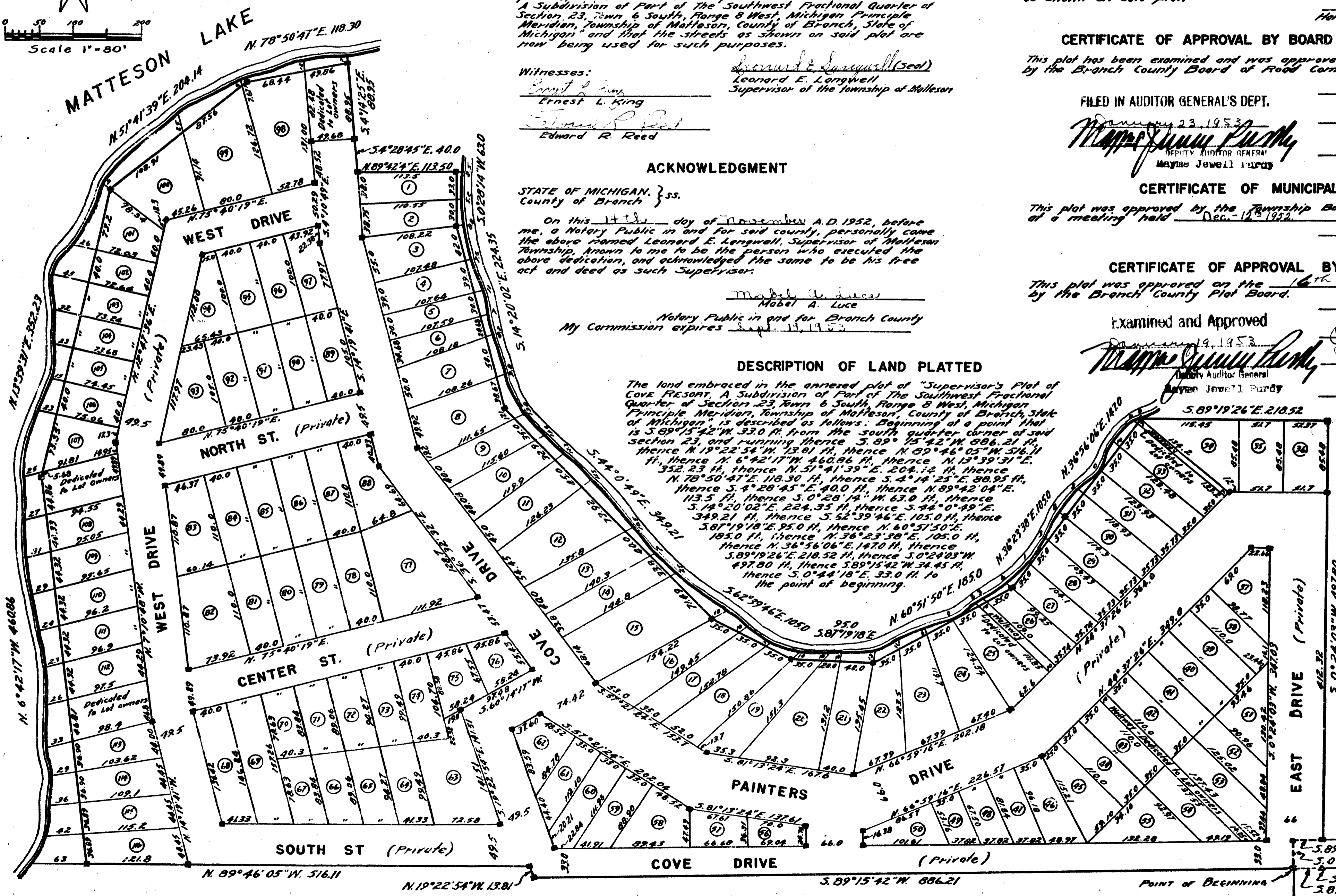
STATE OF MICHIGAN, } ss.
County of Branch }

On this 14th day of November A.D. 1952, before me, a Notary Public in and for said county, personally came the above named Leonard E. Longwell, Supervisor of Matteson Township, known to me to be the person who executed the above dedication, and acknowledged the same to be his free act and deed as such Supervisor.

Mabel A. Luce
Notary Public in and for Branch County
My Commission expires Sept. 11, 1953

DESCRIPTION OF LAND PLATTED

The land embraced in the annexed plat of "Supervisor's Plat of Cove Resort, A Subdivision of Part of The Southwest Fractional Quarter of Section 23, Town 6 South, Range 8 West, Michigan Principle Meridian, Township of Matteson, County of Branch, State of Michigan" is described as follows: Beginning at a point that is 5.89°15'42"W. 33.0 ft. from the south quarter corner of said section 23, and running thence S. 89° 15' 42" W. 886.21 ft., thence N. 19° 22' 54" W. 13.81 ft., thence N. 89° 46' 05" W. 516.11 ft., thence N. 6° 42' 17" W. 460.86 ft., thence N. 13° 39' 31" E. 352.23 ft., thence N. 51° 41' 39" E. 204.14 ft., thence N. 78° 50' 47" E. 118.30 ft., thence S. 4° 28' 45" E. 80.95 ft., thence S. 4° 28' 45" E. 40.0 ft., thence N. 89° 42' 04" E. 113.5 ft., thence S. 0° 28' 14" W. 63.0 ft., thence S. 14° 20' 02" E. 224.35 ft., thence S. 44° 0' 49" E. 349.21 ft., thence S. 52° 39' 46" E. 105.0 ft., thence 5.87°19'18"E. 95.0 ft., thence N. 60° 51' 50" E. 185.0 ft., thence N. 36° 56' 06" E. 147.0 ft., thence 5.89°19'26"E. 218.52 ft., thence S. 0° 24' 03" W. 497.80 ft., thence S. 89° 15' 42" W. 34.45 ft., thence S. 0° 44' 18" E. 33.0 ft. to the point of beginning.



COPY

Register's Office
Branch County, }
Plat of Supervisor's Plat of Cove
Resort, Township of Matteson
was Recorded this 21 day of
January, A.D., 1953, at 1 o'clock
P. M. in Liber 3 of Plats
on Page 43
Herbert G. Murrell
Register of Deeds
ORIGINAL ON FILE

I HEREBY CERTIFY THAT THIS COPY IS A TRUE COPY OF THE MAP OR PLAT FORWARDED THE REGISTER OF DEEDS FOR RECORDING.

COMPARED January 19, 1953
Mayme Jewell Purdy
DEPUTY AUDITOR GENERAL
Mayme Jewell Purdy

33572