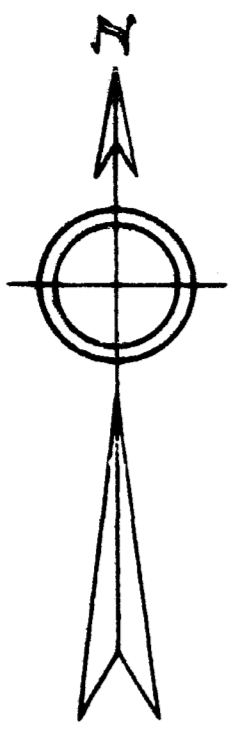


10-1 51

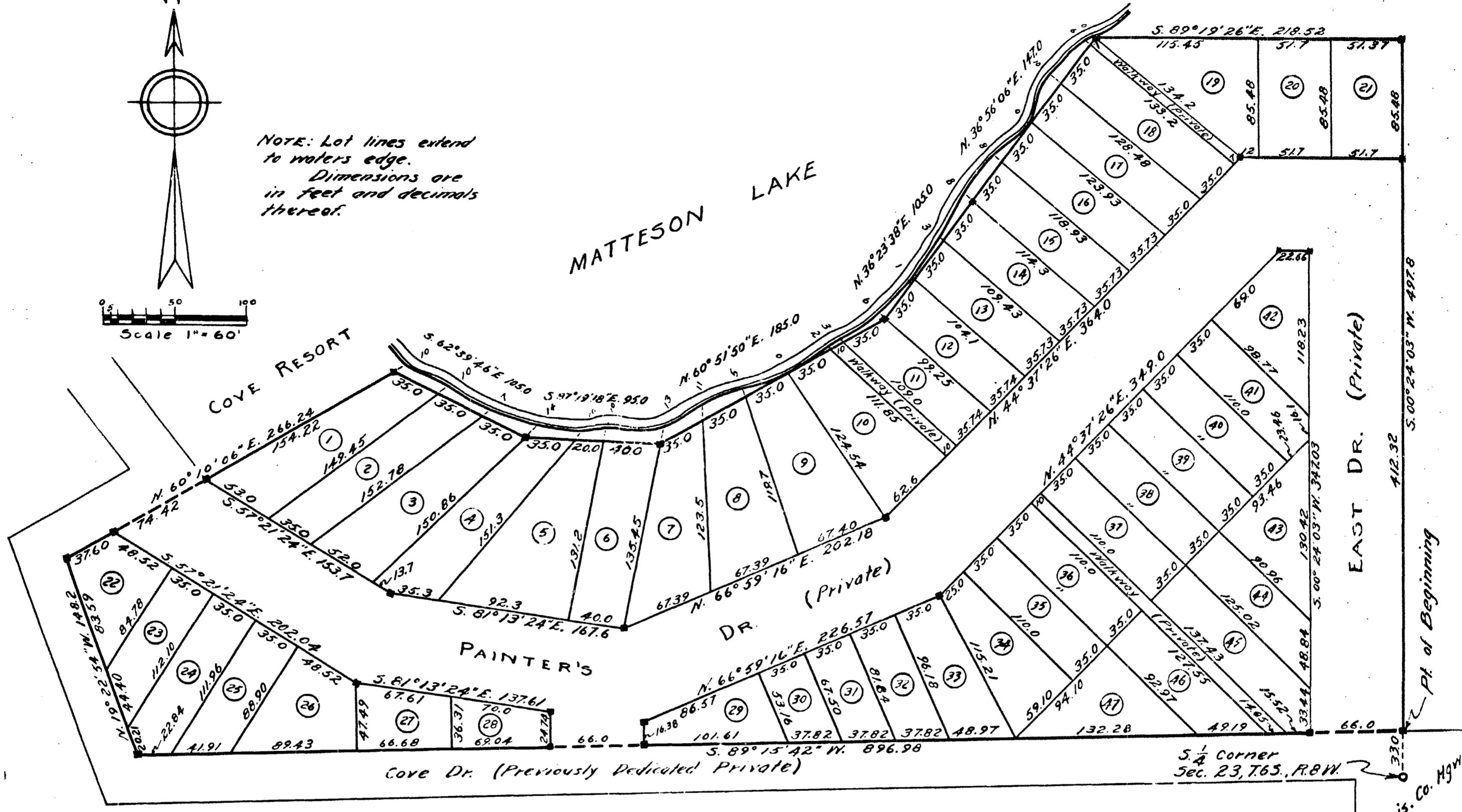
2nd Copy

"COVE RESORT No 2"

A SUBDIVISION OF PART OF THE SOUTHWEST FRACTIONAL QUARTER OF SECTION 23, TOWN 6 SOUTH, RANGE 8 WEST, MICHIGAN PRINCIPLE MERIDIAN, TOWNSHIP OF MATTESON, COUNTY OF BRANCH, STATE OF MICHIGAN



NOTE: Lot lines extend to water edge. Dimensions are in feet and decimals thereof.



DEDICATION

KNOW ALL MEN BY THESE PRESENTS, That we Harry C. Painter as proprietor, and Florence A. Painter his wife, have caused the land embraced in the annexed plat to be surveyed, laid out and plotted, to be known as "Cove Resort No 2" A Subdivision of Part of The Southwest Fractional Quarter of Section 23, Town 6 South, Range 8 West, Michigan Principal Meridian, Township of Matteson, County of Branch, State of Michigan, and that the Streets and Walkways as shown on said plat are hereby dedicated to the use of the lot owners only.

Signed and Sealed in Presence of

Harold L. Russell
Grace E. Russell

Harry C. Painter (L.S.)
Florence A. Painter (L.S.)

STATE OF MICHIGAN, } ss.
County of Branch

On this 31st day of August 1951 before me, a Notary Public in and for said county, personally came the above named Harry C. Painter and Florence A. Painter his wife, known to me to be the persons who executed the above dedication, and acknowledged the same to be their free act and deed.

Beatrice Strong
Notary Public, Branch Co., Mich.

My Commission Expires May 31, 1953

DESCRIPTION OF LAND PLATTED

The land embraced in the annexed plat of "Cove Resort No 2" A Subdivision of Part of the Southwest Fractional Quarter of Section 23, Town 6 South, Range 8 West, Michigan Principal Meridian, Township of Matteson, County of Branch, State of Michigan is described as follows: Beginning at a point that is N. 00° 24' 03" E. 33.0 ft. from the south quarter corner of said section 23, and running thence S. 89° 15' 42" W. 896.98 ft., thence N. 19° 22' 54" W. 148.2 ft., thence N. 60° 10' 06" E. 266.24 ft., thence S. 62° 39' 46" E. 105.0 ft., thence S. 87° 19' 18" E. 95.0 ft., thence N. 60° 51' 50" E. 185.0 ft., thence N. 36° 23' 38" E. 105.0 ft., thence N. 36° 36' 06" E. 147.0 ft., thence S. 89° 19' 26" E. 218.52 ft., thence S. 00° 24' 03" W. 497.8 ft. to the point of beginning.

SURVEYOR'S CERTIFICATE

I hereby certify that the plat hereon delineated is a correct one and that permanent metal monuments consisting of bars not less than one-half inch in diameter and 48 inches in length, encased in a concrete post at least 4 inches square and 48 inches in depth have been placed at points marked thus (■) as thereon shown at all angles in the boundaries of the land platted, at all the intersections of streets, and at the intersections of streets with the boundaries of the plat as shown on said plat.

Harold L. Russell
Harold L. Russell - Reg. Land Surveyor

CERTIFICATE OF APPROVAL BY BOARD OF COUNTY ROAD COMM. This plat has been examined and was approved on the 21st day of September 1951, by the Branch County Board of Road Commissioners.

Glyn Haverly
Chairman
Veer Zeff
Member
Rex Rossman
Member

CERTIFICATE OF MUNICIPAL APPROVAL

This plat was approved by the Township Board of the Township of Matteson at a meeting held August 29, 1951

Will James
Clerk

CERTIFICATE OF APPROVAL BY COUNTY BOARD

This plat was approved on the 30th day of August 1951 by the Branch County Plat Board.

Herbert G. Hurrell
Register of Deeds
Earl Kinn
County Clerk
Ralph Olney
County Treasurer

COUNTY TREASURER'S CERTIFICATE RELATING TO TAXES

Office of County Treasurer, Branch County. I hereby certify, that there are no tax liens or titles held by the State on the lands described hereon, and that there are no tax liens or titles held by individuals on said lands for the five years preceding the 30th day of August 1951 and that the taxes for said period of five years are all paid, as shown by the records of this office. This certificate does not apply to taxes, if any, now in process of collection by township, city or village collecting officers.

Ralph Olney
County Treasurer

Register's Office
Branch County, Mich.
Plat of Cove Resort No 2
Submitted this 5th day of September 1951
Ad. 19 51
P. Branch Co. Clerk
in Page 27

Herbert G. Hurrell
Register of Deeds

Examined and Approved
Maude J. Purdy
Deputy Auditor General

THIS COPY OF THE PLAT OR PLAN FORWARDED THE REGISTER OF DEEDS FOR RECORDING.

Maude J. Purdy
Deputy Auditor General